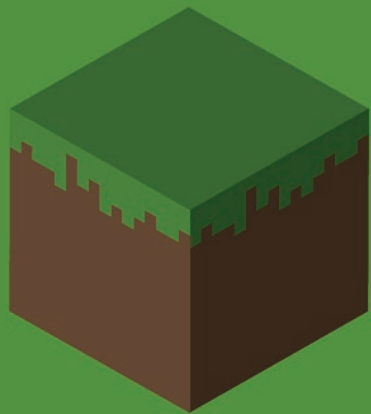


JUPITER ARTLAND MINECRAFT: SCULPTURE CHALLENGE

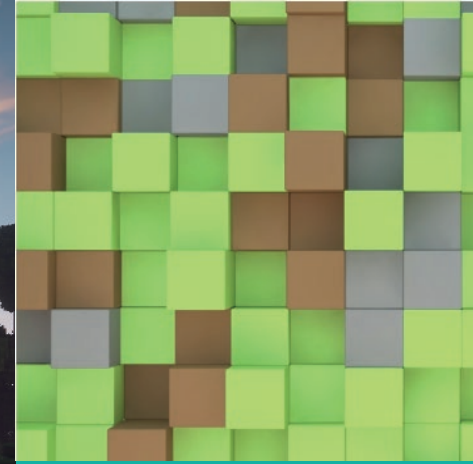


THE CHALLENGE:

To coincide with **WORLD EARTH DAY**, we challenge **YOU** to design and build your own sculpture for Jupiter Artland in Minecraft, responding to the themes of Art, Nature and Learning.

1. Choose a location for your sculpture at Jupiter Artland.
2. Come up with an idea! Use our 'proposals' worksheet to get inspired.
3. Sketch out your idea, adding notes to explain your thought process.
4. Build your sculpture at Jupiter in Minecraft. Remember to give it a title!
5. Send eleanor@jupiterartland.org your application form and contact details to be in with a chance to win!

The competition will close on the 16 May and the winning design will be announced on the 22 May.



THE PRIZE:

Your sculpture will be added to the permanent collection at Jupiter Artland in Minecraft. You and your family will also be invited to come to Jupiter for free to visit the Artland in real life, meet the curators and receive a Jupiter goodie-bag plus a £50 Gift Card of your choice.

ABOUT JUPITER ARTLAND IN REAL LIFE:

Jupiter Artland Foundation is a contemporary sculpture park just outside Edinburgh, featuring artworks by world-leading artists including Antony Gormley, Andy Goldsworthy, Cornelia Parker, Tania Kovats and Anya Gallaccio, to name but a few. Each year, artists are invited to Jupiter Artland to create a new piece of art in response to the landscape.

The placement of each artwork, and its relationship to the natural world around it, is a very important aspect of each sculpture.

This type of sculpture is known as site-specific artwork.

The placement helps the sculpture to tell its story. We are challenging you to propose your own site-specific sculpture for Jupiter Artland that responds to themes of art, learning and nature.



You can find out more about all the artworks at Jupiter Artland [HERE](#), download a map of [HERE](#) or download our family-friendly artwork guide [HERE](#).

GETTING STARTED:

WHAT DOES A SCULPTOR DO ALL DAY?

A sculptor is an artist who creates three-dimensional artworks out of all sorts of materials. Sculptors can even make artworks out of water, air words and ideas! There is no material that is off-limit to a sculptor. That's why we love sculpture at Jupiter Artland.

Traditionally, a sculptor would have worked in stone, wood, metal or clay to produce three-dimensional artworks, often creating a representation of something that exists in real life. Common types of classical sculpture include 'statues', which represent people or animals, or 'monuments' which commemorate important people or special events.

A good artwork tells a story or communicates a feeling to the viewer. Today, artists are using lots of different types of material to convey their message to the viewer.



To get started, let's look at how sculptors have responded to the natural landscape to create their artwork for Jupiter Artland. When looking at artworks, use these questions and prompts.

- Can you guess the story each artist wanted to tell?
Prompts: emotions, memories, discovering, ideas, magic
- What decisions did the artist make?
Prompts: material, colour, size, view-points, where is the viewer?
- How does the artwork relate to the landscape around it?
Prompts: natural, artificial, secret, stand-out, planting, paths, close-up, far-away

LOVE BOMB BY MARC QUINN:



Look at this photo of the sculpture Love Bomb, created by artist Marc Quinn. Fill in the questions below, using the prompts to help you.

- Can you guess the story the artist wanted to tell?

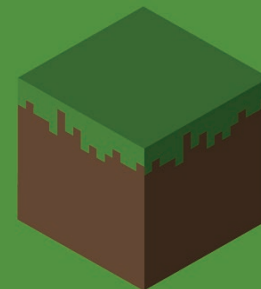
Prompts: emotion, surprise, landmark, real, fake, contrast, sky, landscape, changing weather, what does the title mean?

- What decisions did the artist make?

Prompts: material, colour, size, view-points, where is the viewer?

- How does the artwork relate to the landscape around it?

Prompts: natural, artificial, secret, stand-out, close-up, far-away



When you've completed the above questions, read on to find out more about Love Bomb.

FIND OUT MORE:

Marc Quinn's Love Bomb (2006) brings together 9 orchids (a type of exotic flower); it is 12 metres high and 7 metres wide. For its size, it is very flat, like a cardboard cut-out pasted onto the landscape. It is made from stainless steel, covered with printed vinyl, which means that it will last a very long time, unlike a real flower that fades overtime.

The artist Marc Quinn wanted the viewer to feel overwhelmed, like how an insect might feel when looking up at it. Quinn is thinking about how humans manipulate nature, for example, by genetically modifying crops. He is also considering how digital technology, like Photoshop, allows us to manipulate images of the natural world. Does Love Bomb look real or fake?

The artist is also thinking about how flowers make us feel and their associations with gardens, paradise and pleasure. Can you imagine all the flowers in the world blossoming at the same time? How would that make you feel?



Take-away ideas for your Minecraft sculpture:

A 2-D picture in a 3-D landscape

Pop Art

Pixel Art

Totem or Icon

Exaggerated size

RIVERS BY TANIA KOVATS:

Read this description of Tania Kovats' artwork Rivers (2012) below:

One hundred specimens of water from one hundred rivers around the British Isles have been collected, distilled into one hundred sealed museum quality jars, and stored inside a new boathouse. Each sample of water holds the memories of time, place and events, preserving them forever.



ONE HUNDRED RIVERS

2012

Tania Kovats

ALFORD	LECHT
ALN	LEITH
ALUN	LIVET
ARUN	LYM
ASKER	MADFORD
AVON	MARDLE
AXE	MERSEY
BEAULIEU	MONESS
BECKA	ORWELL
BLACKADDER	OTTER
BLACKWATER	OUSE
BOVEY	PAR
BRAIN	PARRETT
BRAN	PIDDLE
BRATHAY	REDDAFORD
BRIDE	ROM
BRUE	ROTHAY
CHAR	RUDDYCLEAVE
CHELMER	RYDAL
CHELT	SEDGEMORE
CHURCH	SENNI
CHURN	SEVERN
CLWYD	SID
CLYDE	SMA
CLYST	SPEY
CLYWEDOG	STOUR
COLY	SWADDE
CONWAY	TAMAR
COQUET	TAY
CULM	TEIGN
DART	TEITH
DDU	THAMES
DEE	TIDEY
DON	TILL
EARN	TONE
EASEDALE	TORVER
ELWY	TWEED
ESK	TYNE
EXE	TYWI
FORTH	UDDEN
FOWEY	UMBOURNE
FROME	USK
GRIZEDALE	WANSBECK
GWYDDERIG	WEAVER
HOLY	WEBBURN
HUNTSPILL	WID
KENN	WINNIFORD
KENT	WOOLER
LANGDALE	WYE
LEADON	YARTY

Look at the list of 100 rivers on the right, look at as many photos as you can [HERE](#), watch a short film with Tania Kovats [HERE](#) and then answer the questions on the next page.



QUESTIONS:

WHAT STORY DID THE ARTIST WANT TO TELL?

Prompts: Can you imagine the journey the artist undertook to collect 100 samples of river water? How long did it take? How far did she travel? Was it dangerous? Do you recognise the names of any of the rivers? She collected samples from rivers all over the British Isles almost 10 years ago. How have the rivers changed during that time?

WHAT DESCRIPTION DID THE ARTIST MAKE?

Prompts: At the entrance to the boathouse, the artist has displayed the names of all 100 rivers in the collection. What information does she choose to share? What does she keep a secret? How much of this work exists in our imagination?

HOW DOES THE ARTWORK RELATE TO THE LANDSCAPE AROUND IT?

Prompts: shelter, safety, weather, discovery, natural materials, pond, light, simplicity



Take-away ideas for your Minecraft sculpture:

What types of buildings or shelters are found in landscape?

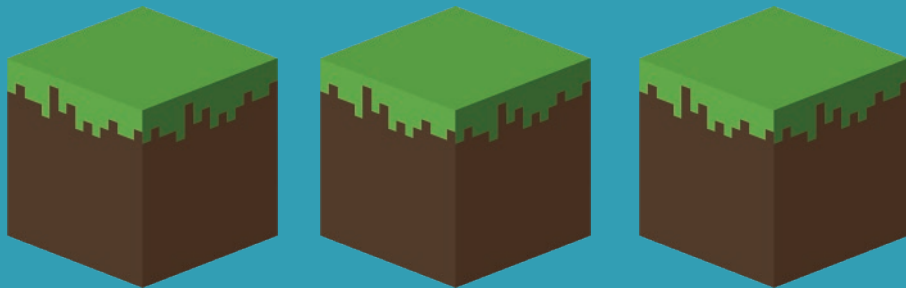
Think about ancient buildings, modern designs or futuristic ones

What is inside your building?

A collection of precious things?

Something that relates to nature?

How will you make your building accessible?



PROPOSALS BY PETER LIVERSIDGE:

What is a proposal? A proposal is a plan or suggestion, typically in written form, put forward for consideration by others.

Artists are often asked to submit a proposal for a new artwork, before they start to making. An artist's proposal may combine drawings and written notes explain what they would like to create. Ideas often evolve and change over time.

The process is about generating, exploring, testing and refining ideas until everyone is happy with the final result. It is highly collaborative.

Between December 2008 and January 2009, artist Peter Liversidge made 134 typed proposals to Jupiter Artland. Some of his proposals were created in real life. Others remain unrealised, existing only in the imagination of the reader.



HERE are some more examples of the proposals Peter Liversidge made for Jupiter Artland, which you can use as inspiration for your our Minecraft proposals.

What will your proposal for a sculpture for Juptier Artland in Minecraft be?

JUPITER ARTLAND MINECRAFT: BUILDING RULES

Be kind to others

Create a sculpture just outside Jupiter that responds to the theme of Art, Learning and Nature

Do not build over or destroy other students work

Do not destroy Jupiter Artland

Keep chat family-friendly

You must label your work

Don't forget to send us your application form

Compromise is key

See Jupiter Artland in Minecraft's full Code of Conduct [HERE](#).

